

ROPE LOCKS & CLUTCHES

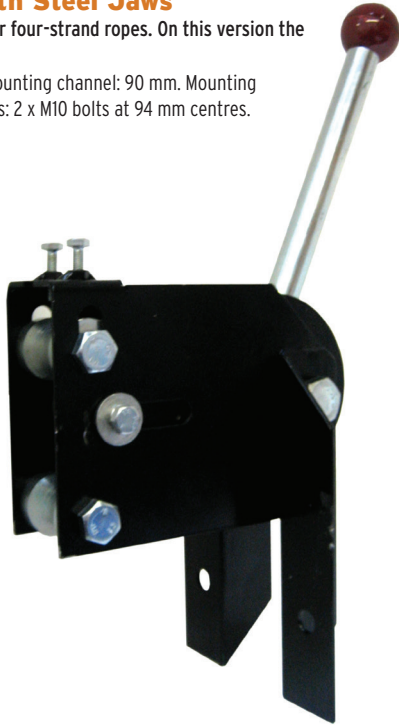
THEATRE ROPE LOCKS

These traditional flyrail rope locks are used to clamp the counterweight hauling line once the balanced flying bar has been finally positioned. They are not designed to act as brakes on unbalanced bars.

Lever Rope Lock with Steel Jaws

Handles 20 mm diameter three or four-strand ropes. On this version the lever is raised to lock the rope.

SPECIFICATION: Rope centre to mounting channel: 90 mm. Mounting channel size: 100 x 50 mm. Fixings: 2 x M10 bolts at 94 mm centres.



code	description	price	10+
HAL267	Steel Jaws [up to lock]	£198.00	£178.20

Lever Rope Lock with Polyurethane Jaws

Handles 20 mm diameter three- or four-strand ropes. The polyurethane jaws have been designed to reduce damage to the hauling lines. On this version the lever is pushed down to lock the rope. It also has a clip to secure the handle in the free running position. Proof-tested to 100 kg using four-strand hemp.

SPECIFICATION: Rope centre to mounting channel: 90 mm. Mounting channel size: 100 x 50 mm. Fixings: 2 x M10 bolts at 94 mm centres.



code	description	price	10+
ROPPJ1	Lever Locks with Polyurethane Jaws	£220.10	£201.65

ROPE CLUTCHES

In any operation involving suspended items using clutches Flints would recommend ropes are finally secured onto a cleat to avoid any chance of accidental release.

Barton DO 550 Rope Clutches

Designed to offer a holding power of up to 550 kg and to control braided ropes up to 12 mm diameter. It requires little effort to use the clutches thanks to the ergonomically-designed handle and bolt-together construction, which also allows for ease of servicing. All three clutches utilise a "true clutch" mechanism which enables lines to be easily and accurately adjusted with maximum grip and minimal slippage when in locked position. Each clutch also allows steady and accurate release under load, with the specially designed teeth to reduce wear on ropes. The clutches have been produced using high-grade plastic components coupled with marine-grade aluminium cams and bases, resulting in lightweight products that provide exceptional strength and are extremely durable even in the harsh marine environment. Competitively priced. Length: 133 mm. Height: 68 mm.



code	description	weight	price
BAR81500	Single	343g	£63.84
BAR81501	Double	544g	£117.17

Rope Lock

Designed to lock hauling lines together to prevent cradle movement. Suitable for ropes up to 20 mm diameter. Larger sizes can be made to order subject to quote and minimum order quantity - please ask. SPECIFICATION: Length: 315 mm. Width: 145 mm. Finish: Black powder coated.



code	weight	price	10+
FHS04220	1372g	£63.93	£53.99

Adding or replacing counterweight sets? We can supply all you need. Call our Rigging Manager for friendly help and advice.